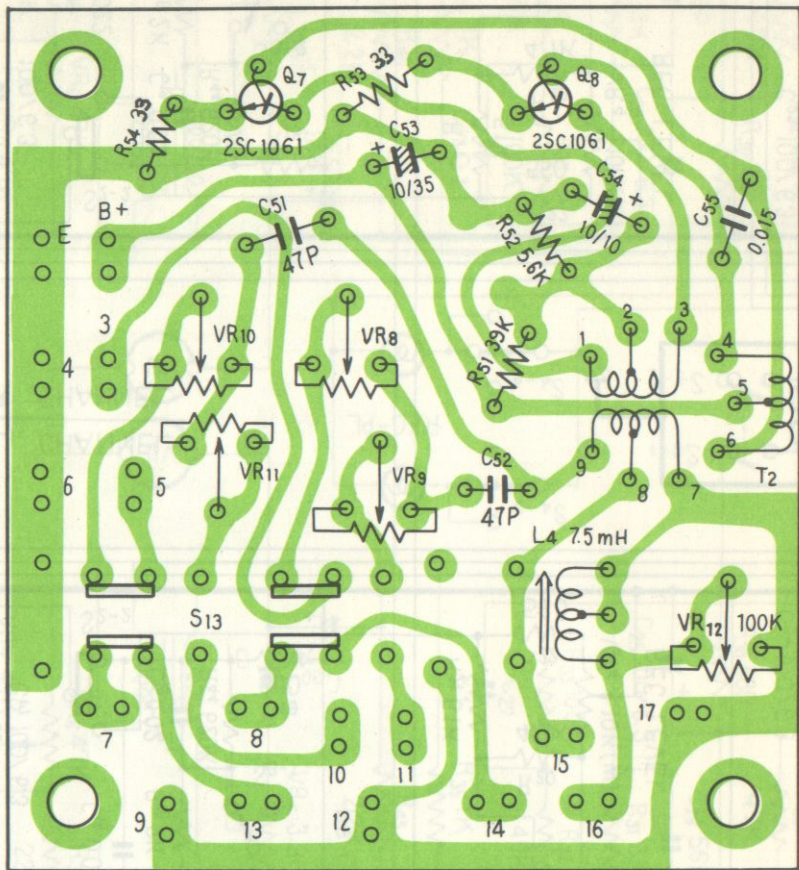




STEREO TAPE DECK

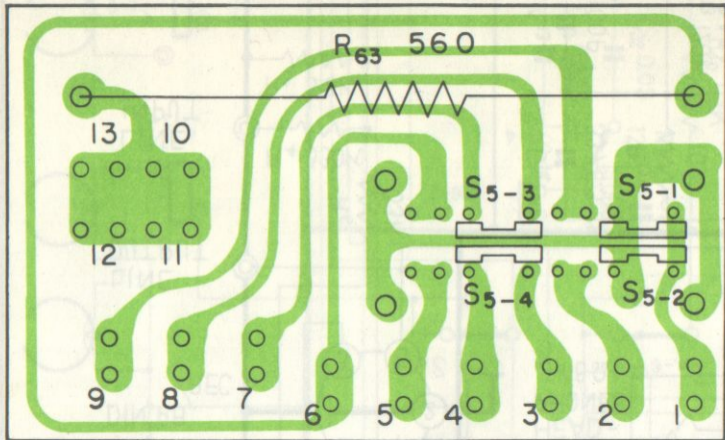
RT-71

F

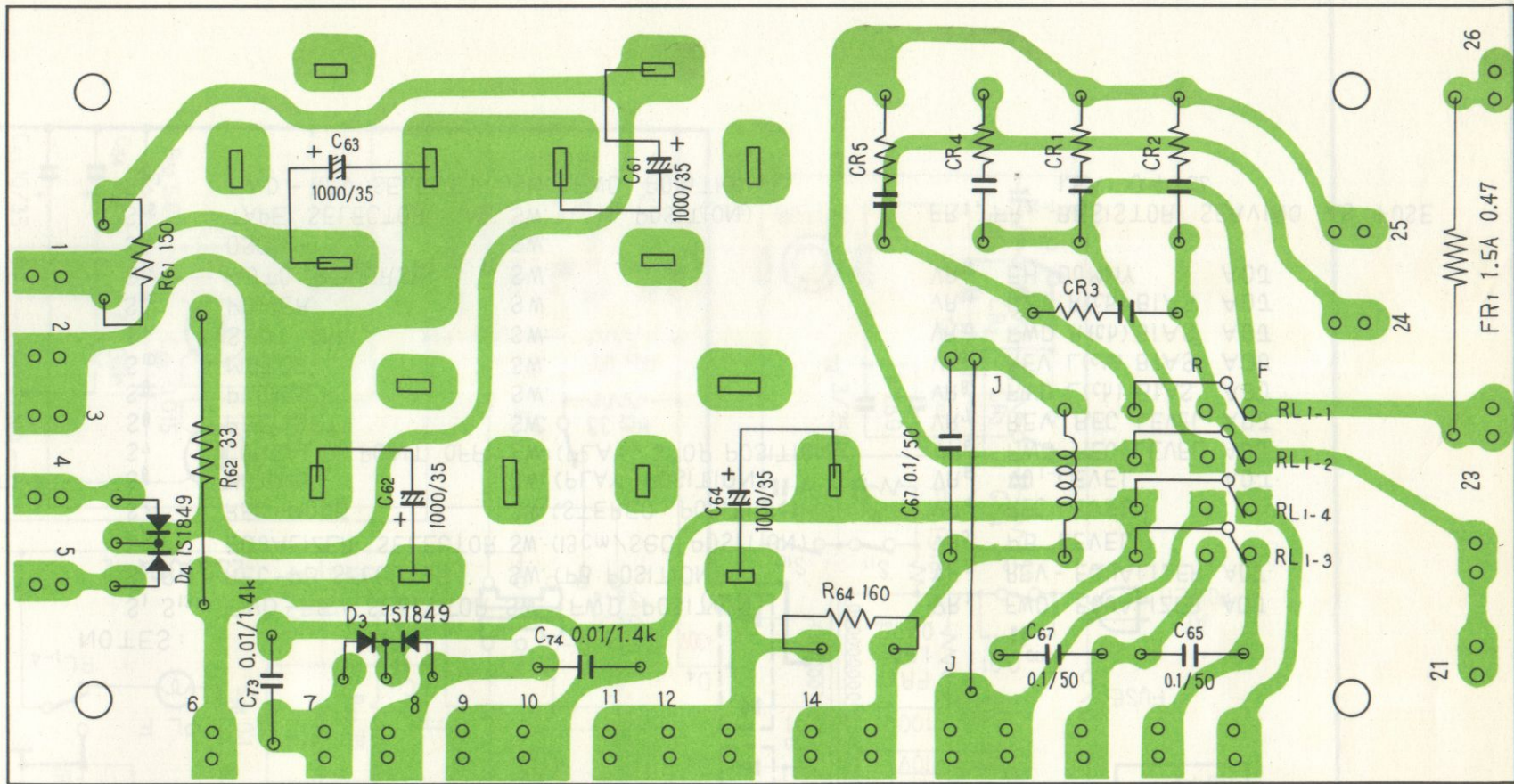


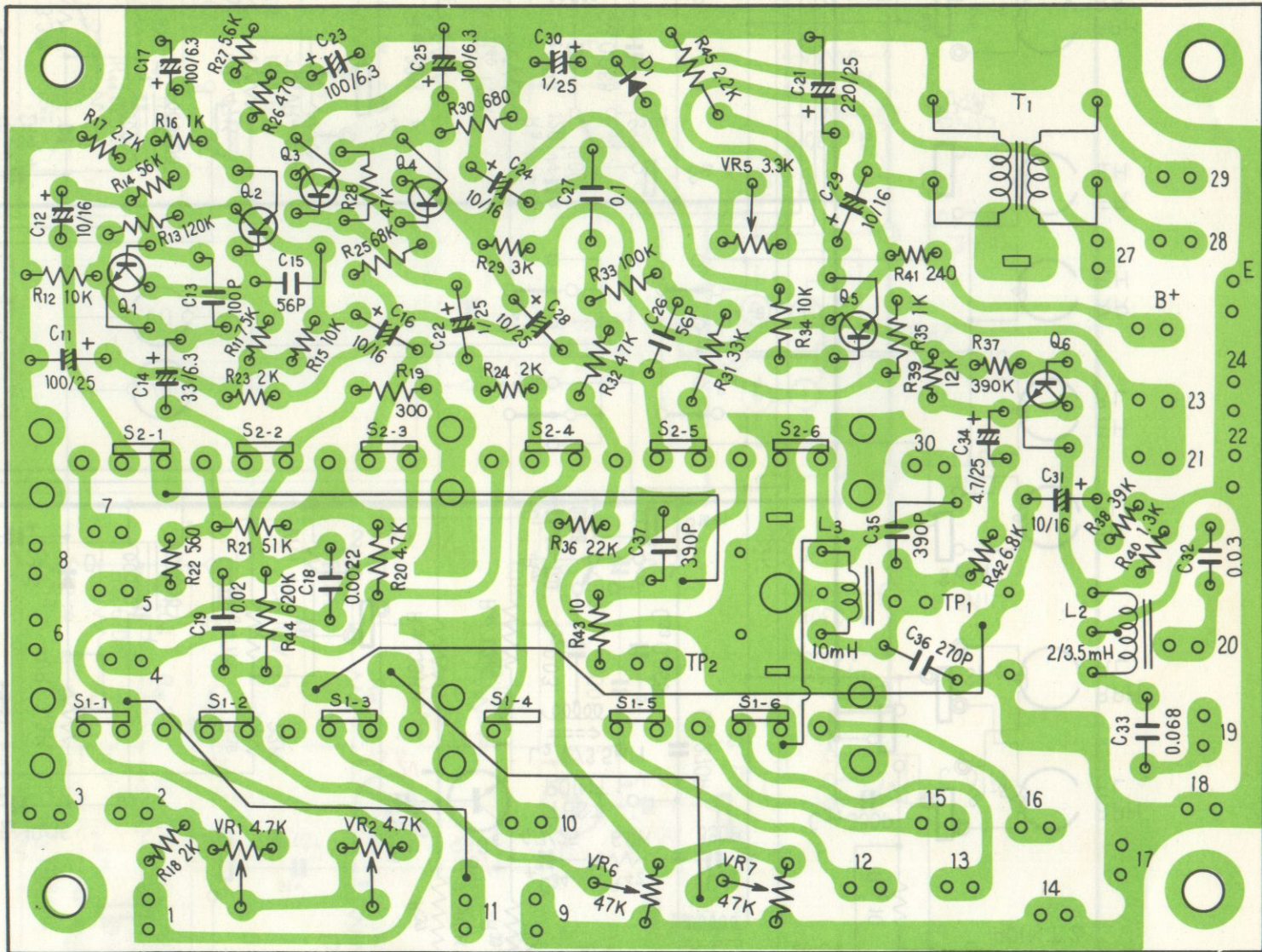
S13 FWD-REV SELECTOR SW.

REC switch ass'y W18-442



Power supply ass'y RWR-019





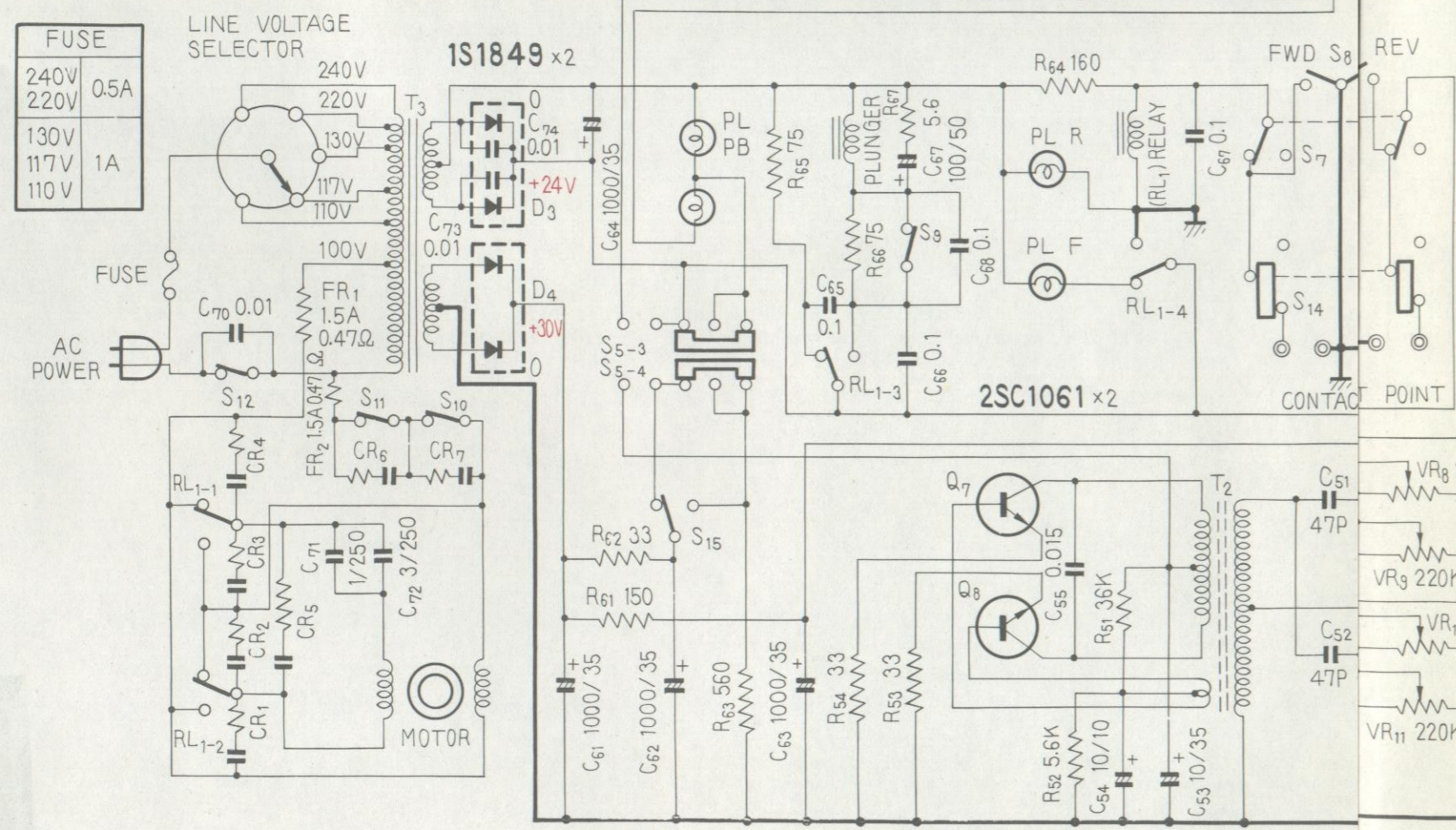
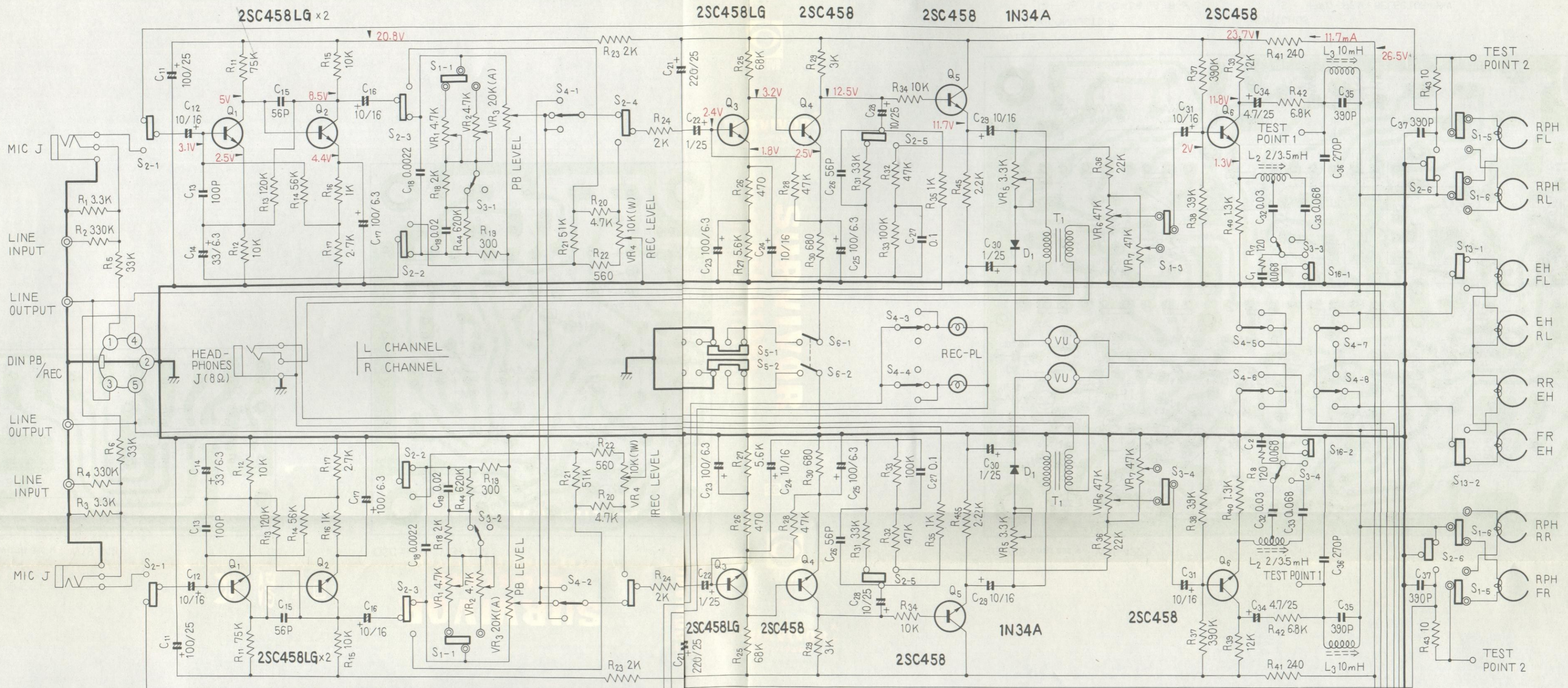
NOTES :

SEMICONDUCTORS

- Q1 ~ Q3 2SC 458 LG B or C
- Q4 ~ Q6 2SC 458 C or D
- D1 IN 34 A

SWITCHES

- S1 FWD - REV SELECTOR SW.
- S2 REC - P. B. SELECTOR SW.



NOTES:

- | | | | |
|--------------------------------|--|------------------|--------------------|
| S ₁ S ₁₃ | FWD-REV SELECTOR SW. (FWD POSITION) | VR ₁ | FWD-EQUALIZER ADJ |
| S ₂ S ₅ | REC-PB SELECTOR SW. (PB POSITION) | VR ₂ | REV-EQUALIZER ADJ |
| S ₃ | EQUALIZER SELECTOR SW. (19cm/SEC POSITION) | VR ₃ | PB LEVEL |
| S ₄ | REC MODE SW. (STEREO POSITION) | VR ₄ | REC LEVEL |
| S ₆ | MUTING SW. (PLAY POSITION) | VR ₅ | VU LEVEL ADJ |
| S ₇ | CONTACT POINT OFF SW. (PLAY/STOP POSITION) | VR ₆ | FWD REC LEVEL ADJ |
| S ₈ | PRE SET SW. | VR ₇ | REV REC LEVEL ADJ |
| S ₉ | PLUNGER SW. | VR ₈ | FWD L(ch) BIAS ADJ |
| S ₁₀ | MOTOR SW. | VR ₉ | REV L(ch) BIAS ADJ |
| S ₁₁ | SHUT OFF SW. | VR ₁₀ | FWD R(ch) BIAS ADJ |
| S ₁₂ | POWER SW. | VR ₁₁ | REV R(ch) BIAS ADJ |
| S ₁₄ | AUTO REVERSE SW. | VR ₁₂ | EH DUMMY ADJ |
| S ₁₅ | OSC. SW. | | |
| S ₁₆ | TAPE SELECTOR SW. (L.H. POSITION) | | |
| RL ₁ | FWD-REV SELECTOR SW. (FWD POSITION) | | |
- FR₁, FR₂ RESISTOR SERVING AS FUSE 1.5A 0.47Ω